

***Promoting Tolerance Through Technology:
Illustrated Stories Address Bullying***

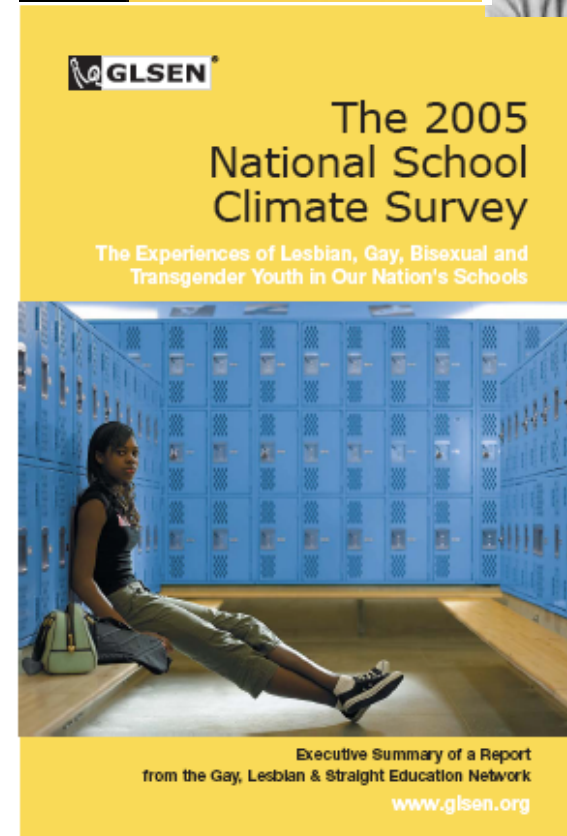
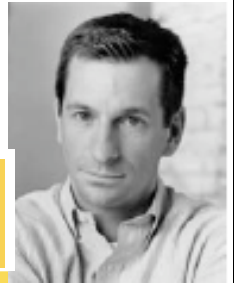
Bleacher Creature Quiz

NECC 2007

Larry Vinson
Technology Director
The Montgomery Academy
Montgomery AL

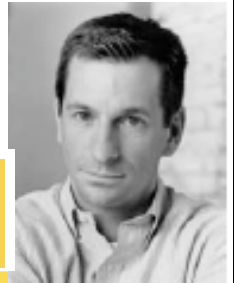
Emily Vickery
Teacher & PD Personal Trainer
The Montgomery Academy
Montgomery AL

In 2005, how many gay and lesbian students reported being unsafe at school?



ToleranceTech.Org
promoting tolerance through technology

64%



The 2005 National School Climate Survey

The Experiences of Lesbian, Gay, Bisexual and
Transgender Youth in Our Nation's Schools



Executive Summary of a Report
from the Gay, Lesbian & Straight Education Network

www.glsen.org

Bullying is just a part of growing up. The effects of bullying on victims are short-term and minor.

True or False?

False — Correct!

In addition to the social, emotional, and physical torment of the actual bullying experience, victims are also more likely than non-victims to suffer from physical illnesses, academic troubles, and enduring mental health problems.

U. S. Department of Education

Bullying is almost exclusively male behavior.

True or False?

False — Correct!

Both boys and girls bully, just in different ways. Male bullies are more likely than female bullies to engage in physical bullying; female bullies typically use verbal and emotional tactics.

U. S. Department of Education

Bullying is not a serious problem for the bullies; they eventually grow out of this behavior.

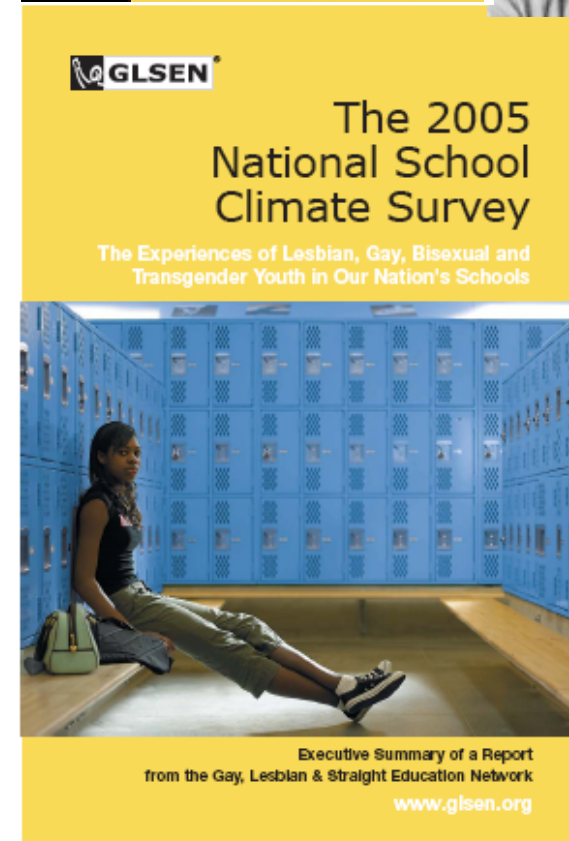
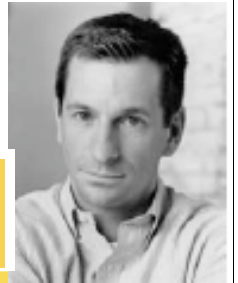
True or False?

False-Correct!

Studies have established a strong correlation between bullying other students during the school years and experiencing legal or criminal troubles with violence as adults.

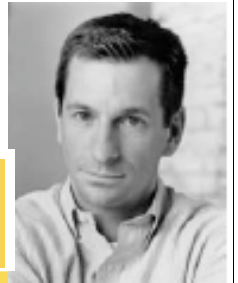
U. S. Department of Education

In 2005, what percentage of gay and lesbian students reported hearing remarks such as “faggot” and “dyke” frequently at school?



ToleranceTech.Org
promoting tolerance through technology

75%



The 2005 National School Climate Survey

The Experiences of Lesbian, Gay, Bisexual and
Transgender Youth in Our Nation's Schools



Executive Summary of a Report
from the Gay, Lesbian & Straight Education Network

www.glsen.org

Most bullying happens at school.

True or False?

True — Correct!

Bullying most often occurs in and around schools — specifically in those areas where there is little or no adult supervision (e.g., playground, hallways, cafeteria, classroom before the lesson begins).

U. S. Department of Education

Most bullying occurs in high school because older students are more confident and willing to pick on others.

True or False?

False — *Correct!*

Some studies indicate that bullying is most prevalent during the elementary school years, while other studies indicate that it increases and peaks during the middle school years. However, it is clear that bullying – though certainly present in high school – is more prevalent among younger students.

U. S. Department of Education

Bullies don't usually pick on passive students; instead, they bully in response to some sort of provocation from their victims.

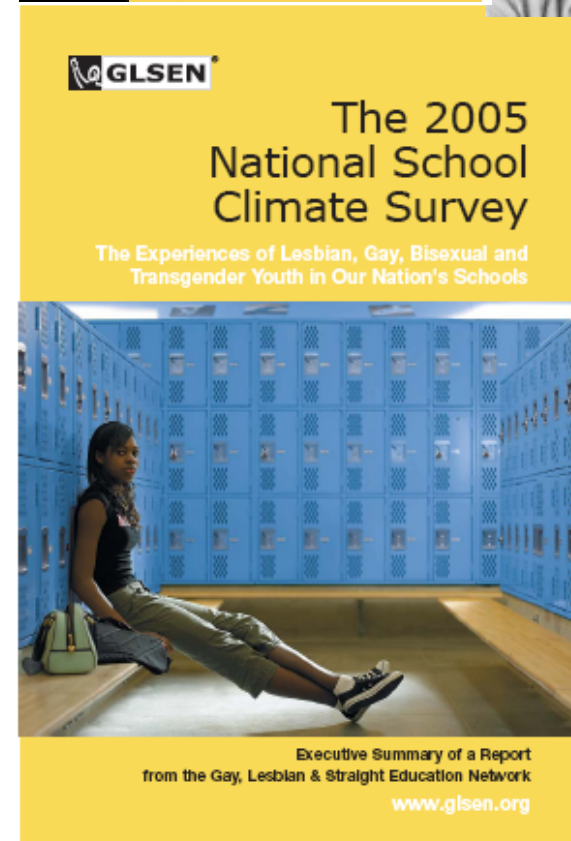
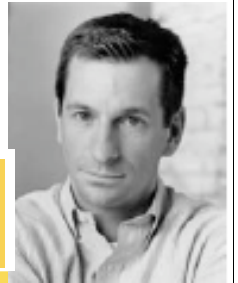
True or False?

U. S. Department of Education

False — Correct!

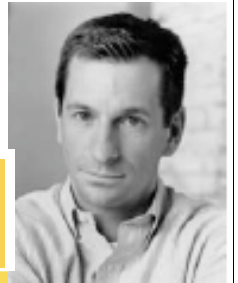
Only 10-15% of victims actually provoke bullies into action. 85-90% of victims are passive, with many not even reporting that they have been bullied.

In 2005, what percentage of gay and lesbian students reported hearing remarks such as “faggot” and “dyke” frequently at school?



ToleranceTech.Org
promoting tolerance through technology

75%



The 2005 National School Climate Survey

The Experiences of Lesbian, Gay, Bisexual and
Transgender Youth in Our Nation's Schools



Executive Summary of a Report
from the Gay, Lesbian & Straight Education Network

www.glsen.org

Bullying is usually verbal, not physical in nature.

True or False?

True— *Correct!*

While bullying can be physical, verbal, emotional, or sexual in nature, verbal bullying – including name-calling – is the most common form.

U. S. Department of Education

According to students in one study,
teachers know when students are being
bullied.

True or False?

False — Correct!

Unfortunately, a Canadian study found that “adults within the school environment dramatically overestimate their effectiveness in identifying and intervening in bullying situations.”

70% of teachers believed that teachers intervene “almost always” in bullying situations, while only 25% of the students agreed with the teacher’s assessment.

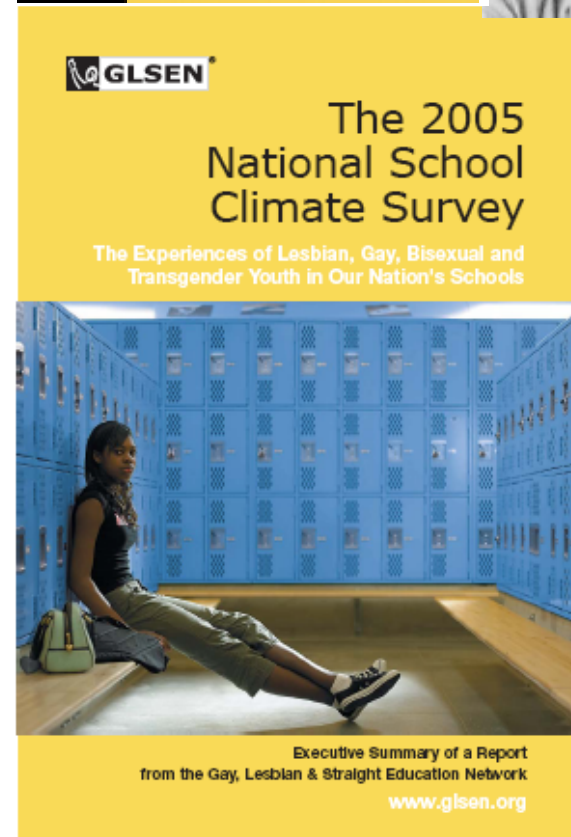
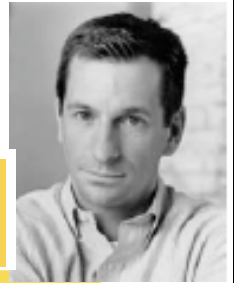
U. S. Department of Education

A bully usually attacks when no one else is watching.

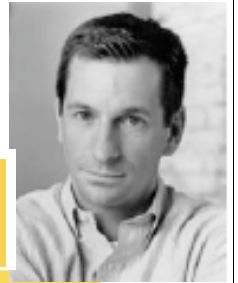
True or False?

False — Correct!
Only 10-15% of victims actually provoke bullies into action. 85-90% of victims are passive, with many not even reporting that they have been bullied.

What percentage of the actions taken by school authorities to address the situation were effective?



43.8%



The 2005 National School Climate Survey

The Experiences of Lesbian, Gay, Bisexual and
Transgender Youth in Our Nation's Schools



Executive Summary of a Report
from the Gay, Lesbian & Straight Education Network

www.glsen.org

Targets of bullies tend to be children with physical differences.

True or False?

False — Correct!

Bullies typically do not choose their victims based on physical attributes. Instead, they usually victimize those peers who display a cluster of psychological weaknesses that make them vulnerable to attack. Victims tend to reveal their poor self concepts, social withdrawal, anxiousness, depression, and fearfulness.

U. S. Department of Education

Bullies are usually insecure loners with low self-esteem.

True or False?

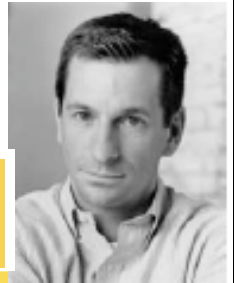
False — Correct!

Bullies are likely to have both friends and followers – in fact, they tend to be rather popular in the early school years.

Furthermore, research indicates that bullies typically have average or above average levels of self-esteem and self-confidence.

U. S. Department of Education

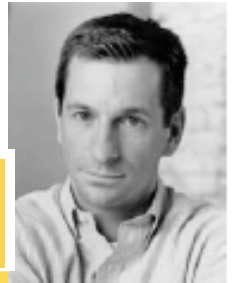
What percentage heard
“that’s so gay” or you’re so
gay”--meaning worthless--at
school?



The cover of the 2005 National School Climate Survey report. It features a yellow background at the top with the GLSEN logo and the title "The 2005 National School Climate Survey" in black text. Below the title is the subtitle "The Experiences of Lesbian, Gay, Bisexual and Transgender Youth in Our Nation's Schools". The central image shows a young woman sitting on a wooden bench in a school hallway lined with blue lockers. At the bottom, there is a yellow banner with the text "Executive Summary of a Report from the Gay, Lesbian & Straight Education Network" and the website "www.glsen.org".

ToleranceTech.Org
promoting tolerance through technology

89%



The 2005 National School Climate Survey

The Experiences of Lesbian, Gay, Bisexual and
Transgender Youth in Our Nation's Schools



Executive Summary of a Report
from the Gay, Lesbian & Straight Education Network

www.glsen.org

If students would just fight back, then bullies would leave them alone.

True or False?

False — Correct!

Fighting back is likely to escalate a bullying situation. In other words, it can lead to more aggression and possibly serious injury. Bullies usually try to unnerve and provoke others — so fighting back just gives them what they want.

U. S. Department of Education

Who said, "Travel is fatal to prejudice,
bigotry and narrow-mindedness"?

Mark Twain